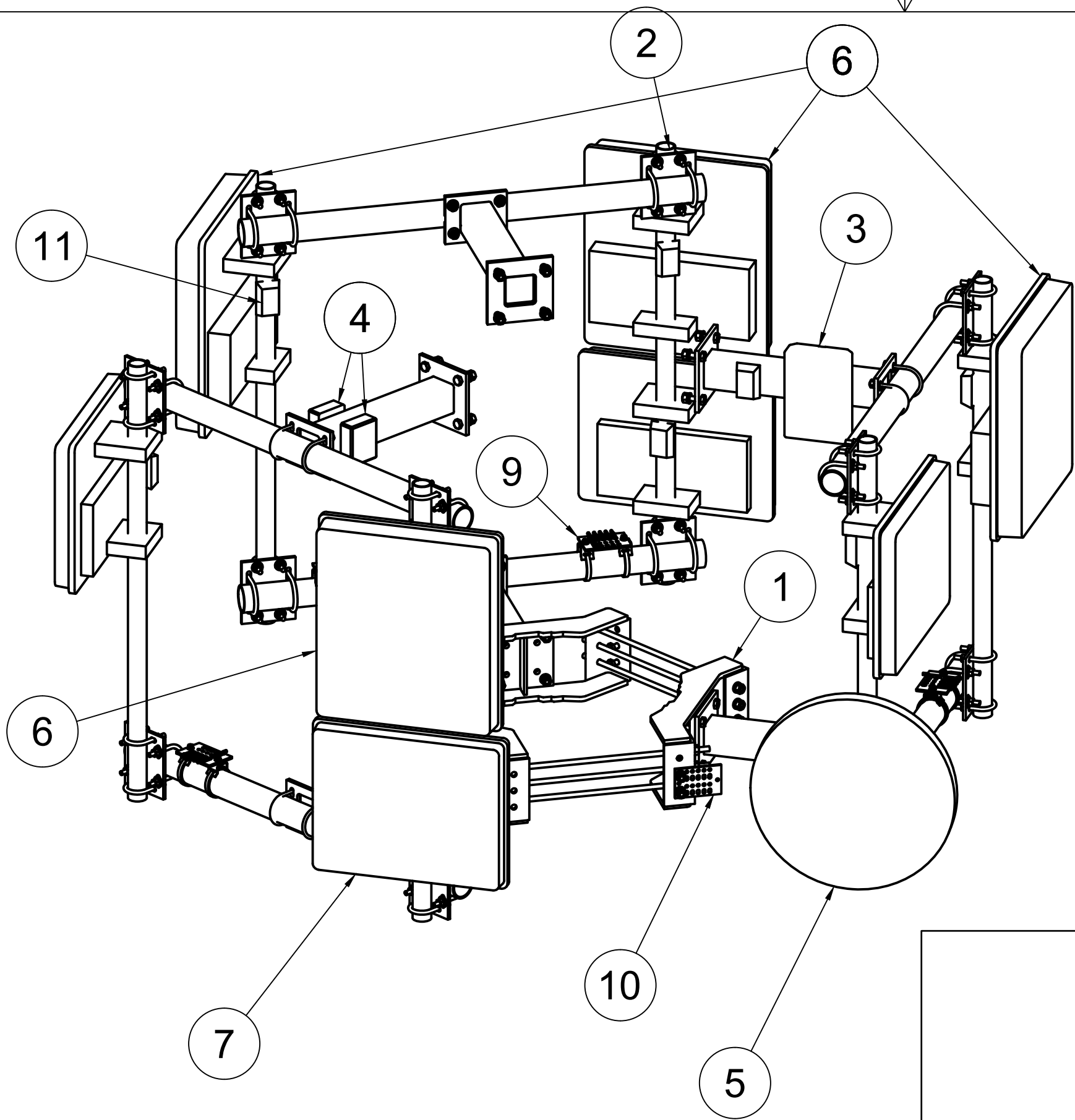
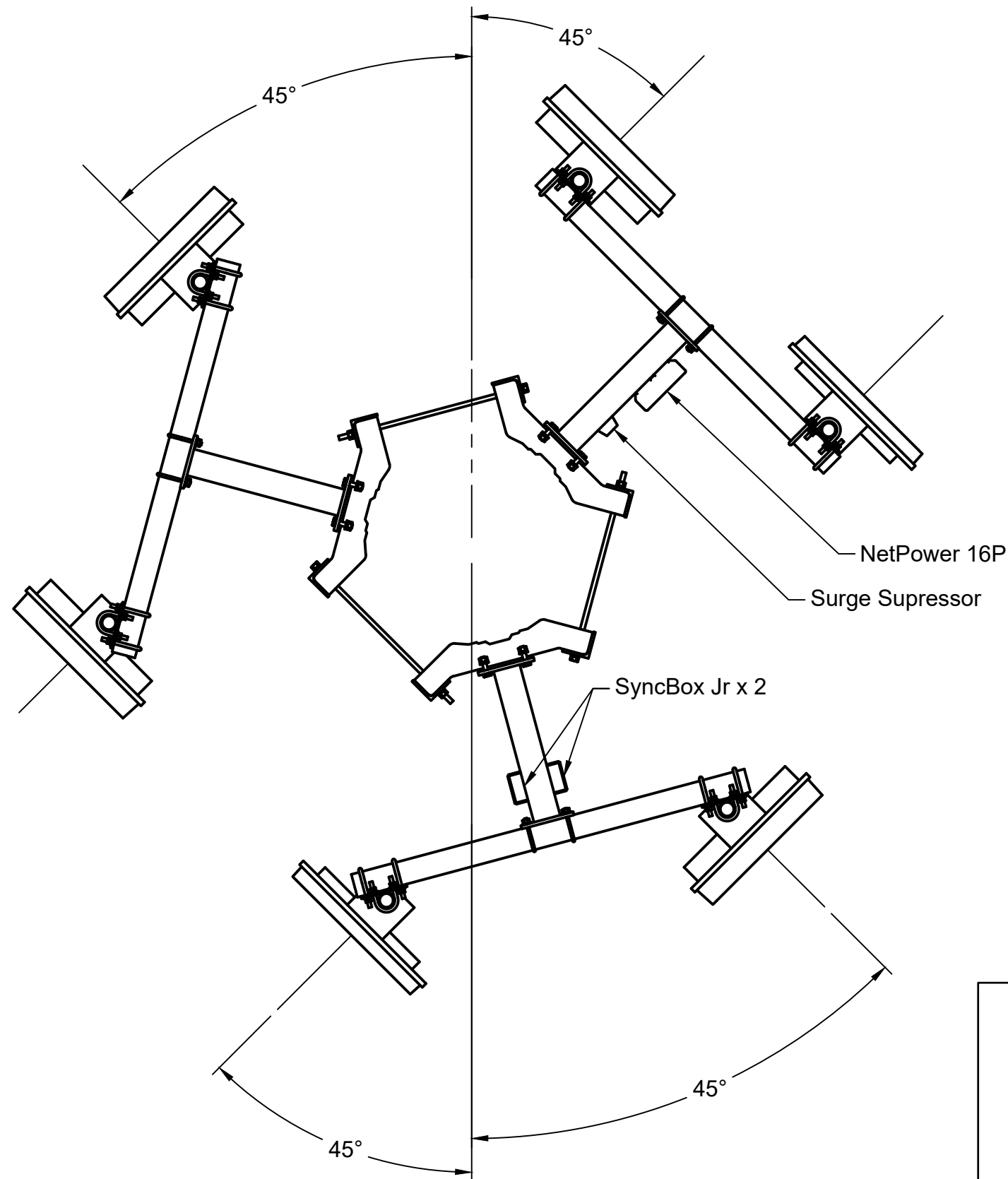


		PROJECT Souza Consulting Example			
		TITLE Radio Equipment and Mounting Overview - Render			
APPROVED		SIZE	CODE	DWG NO	REV
CHECKED		B			
DRAWN	Peter Souza	5/4/2023	SCALE 1:15	WEIGHT	SHEET 1/10

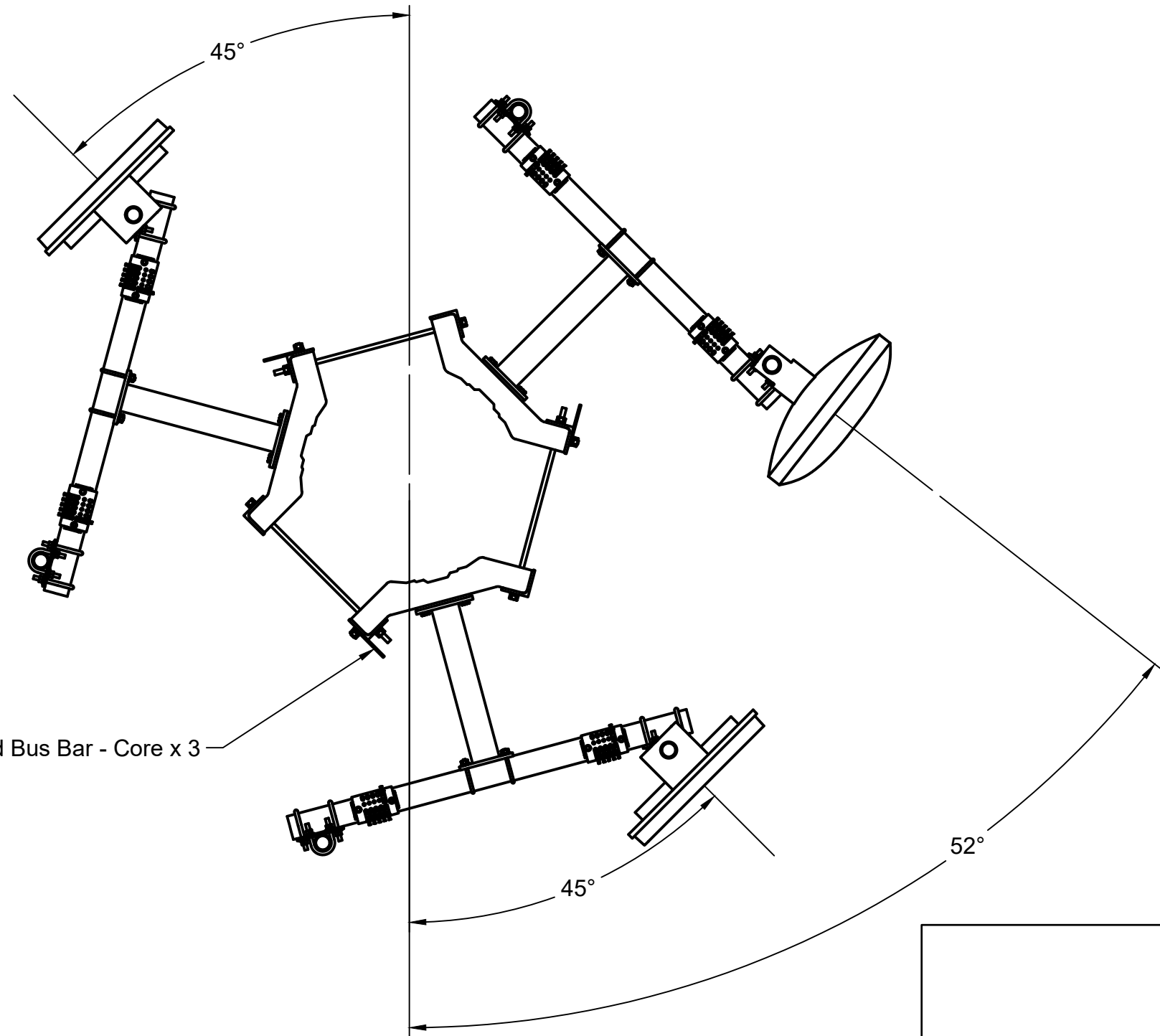


PARTS LIST		
ITEM	QTY	PART NUMBER
1	2	LWRM
2	6	MM02 2ARM
3	1	MIKROTIK NETPOWER 16P
4	2	SYNCBOX JR
5	1	AF60-XG
6	4	PMP 450M 3GHZ
7	4	PMP 450M 5GHZ
9	6	STANDOFF BUS BAR ON 3IN PIPE
10	3	BONDED GROUNDING - CORE
11	9	SURGE SUPPRESSOR

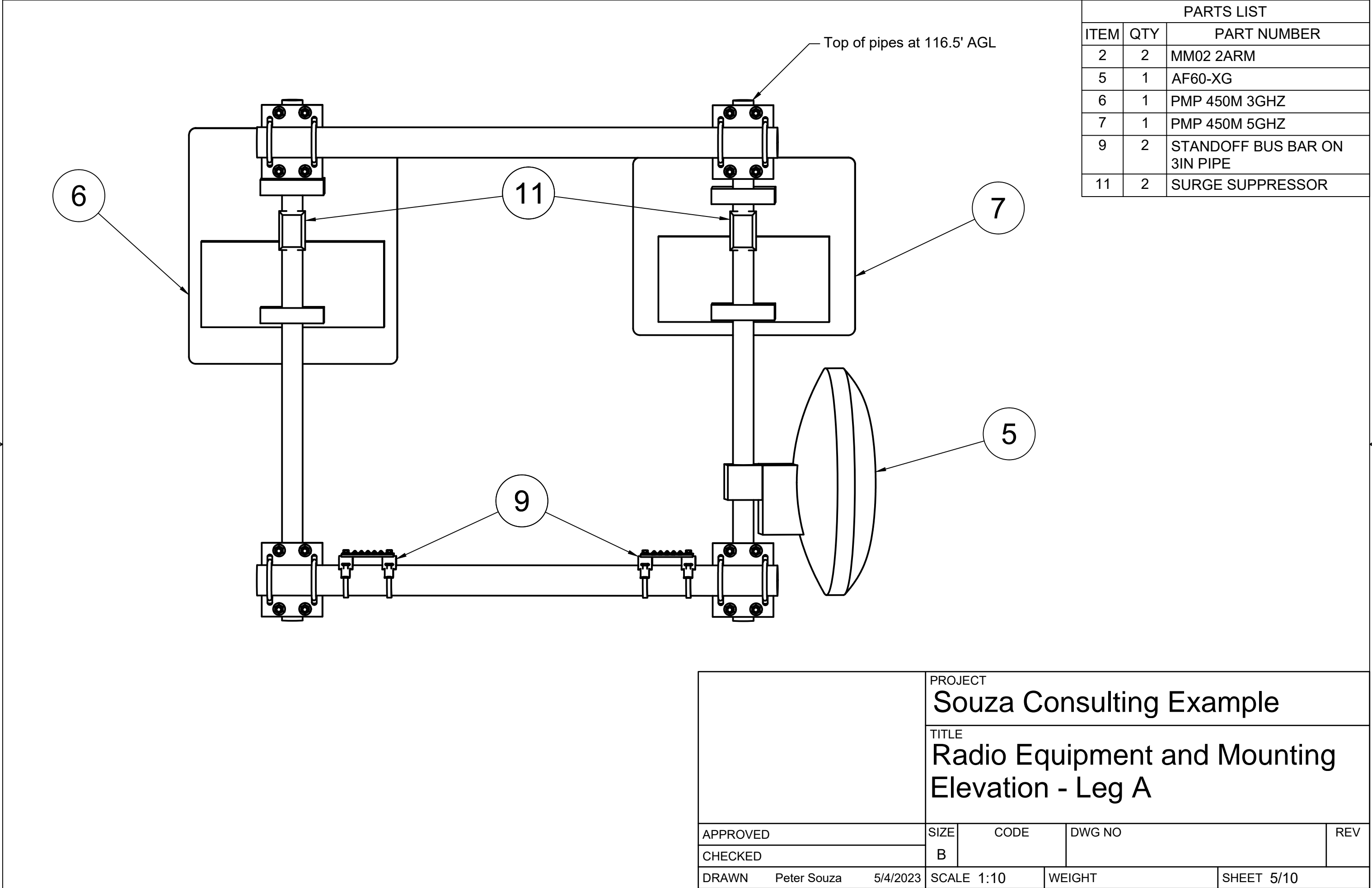
	PROJECT Souza Consulting Example			
	TITLE Radio Equipment and Mounting Overview			
APPROVED	SIZE	CODE	DWG NO	REV
CHECKED	B			
DRAWN	Peter Souza	5/4/2023	SCALE 1:15	WEIGHT
			SHEET 2/10	



		PROJECT Souza Consulting Example			
		TITLE Radio Equipment and Mounting Plan View 115'			
APPROVED		SIZE	CODE	DWG NO	REV
CHECKED		B			
DRAWN	Peter Souza	5/4/2023	SCALE 1:20	WEIGHT	SHEET 3/10

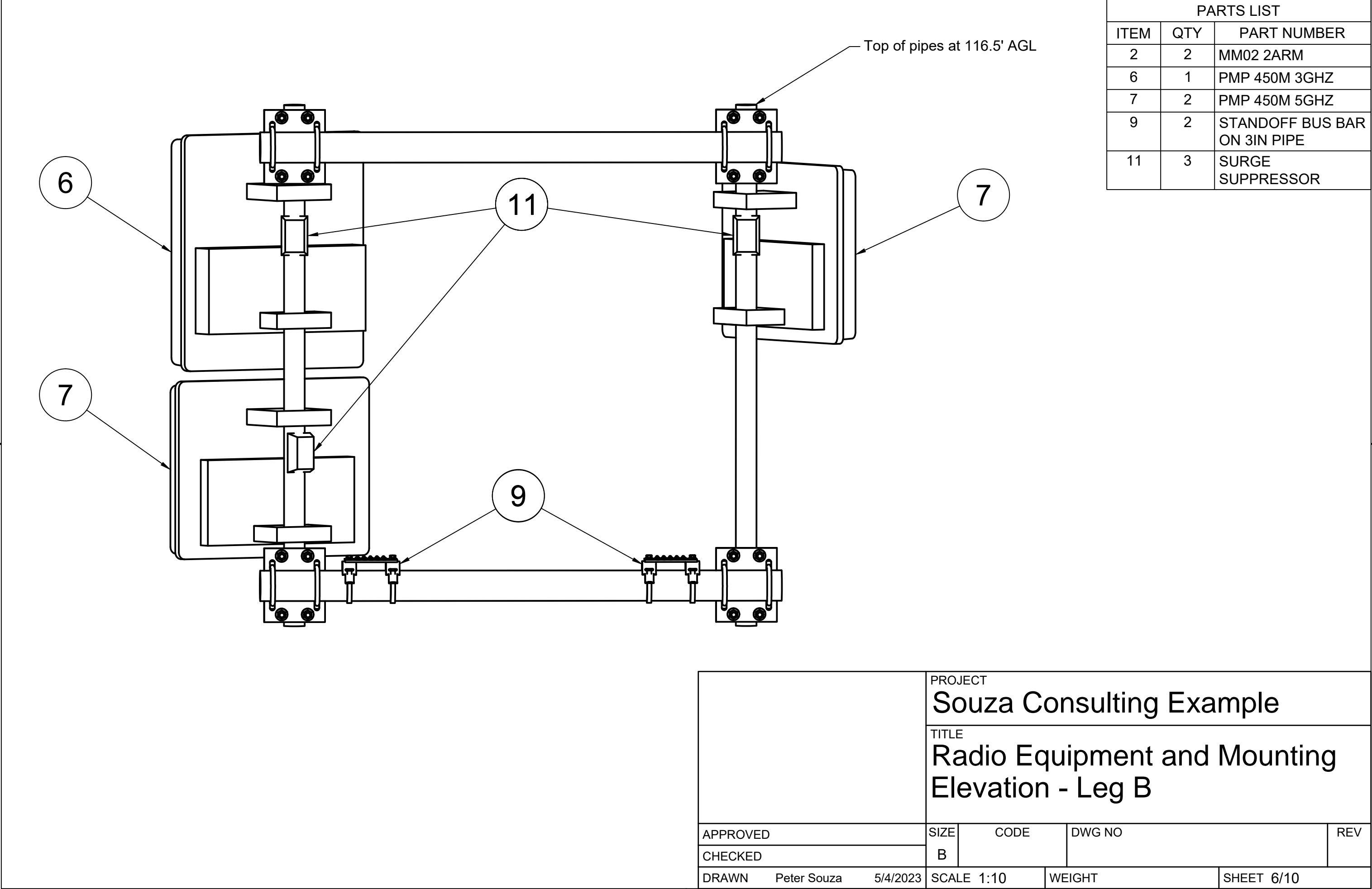


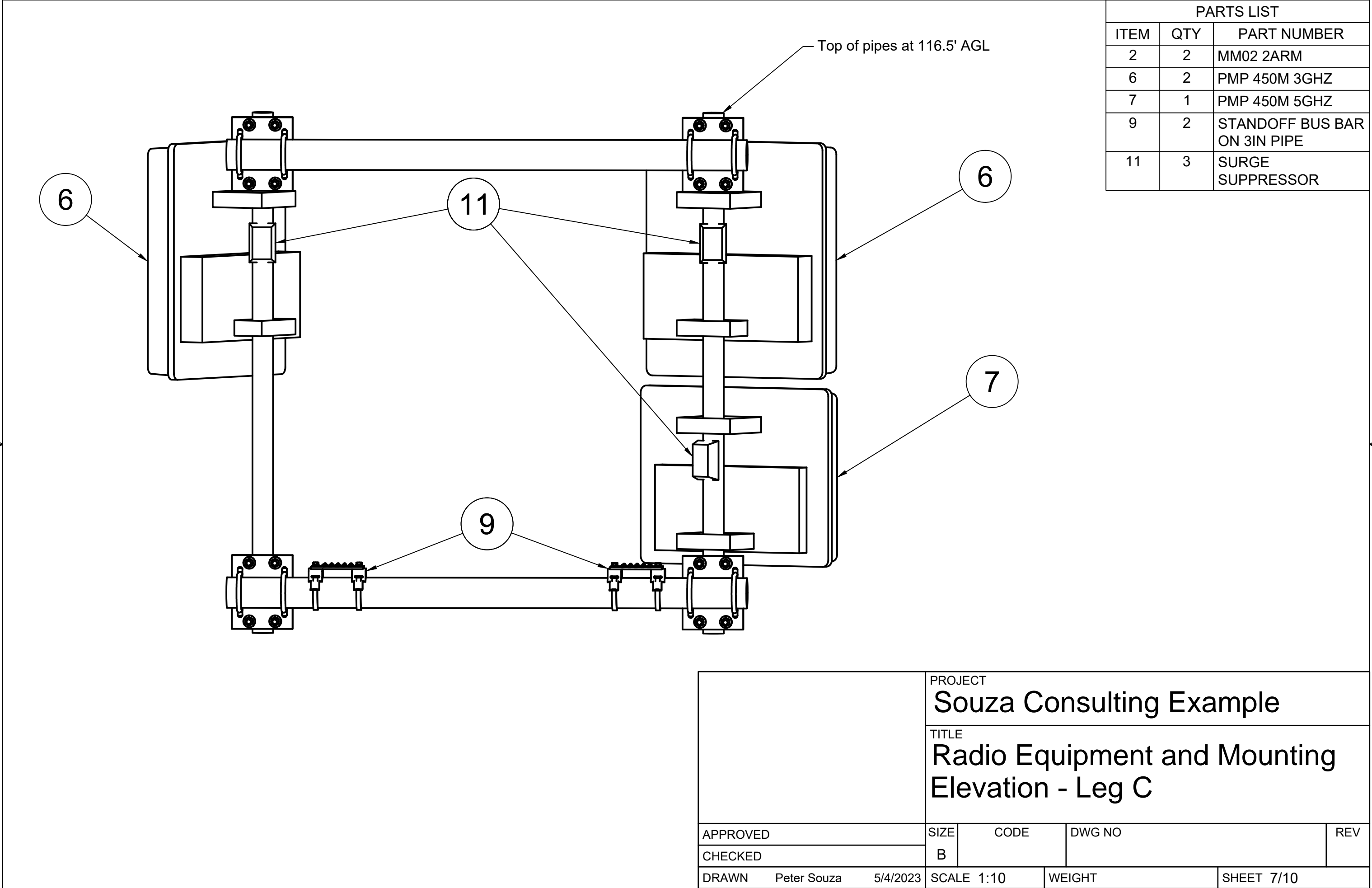
		PROJECT Souza Consulting Example			
		TITLE Radio Equipment and Mounting Plan View 113'			
APPROVED		SIZE	CODE	DWG NO	REV
CHECKED		B			
DRAWN	Peter Souza	5/4/2023	SCALE 1:20	WEIGHT	SHEET 4/10

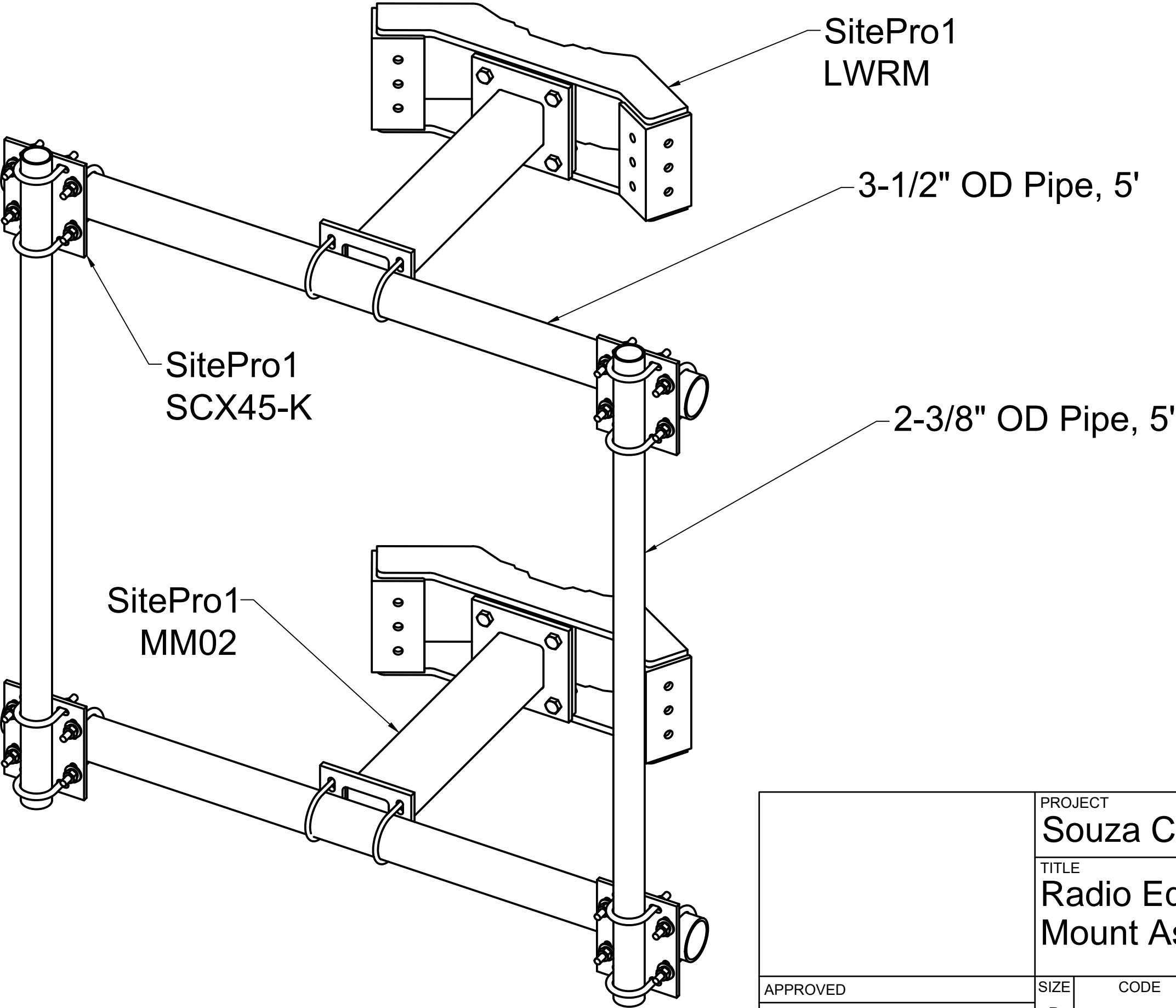


PARTS LIST		
ITEM	QTY	PART NUMBER
2	2	MM02 2ARM
5	1	AF60-XG
6	1	PMP 450M 3GHZ
7	1	PMP 450M 5GHZ
9	2	STANDOFF BUS BAR ON 3IN PIPE
11	2	SURGE SUPPRESSOR

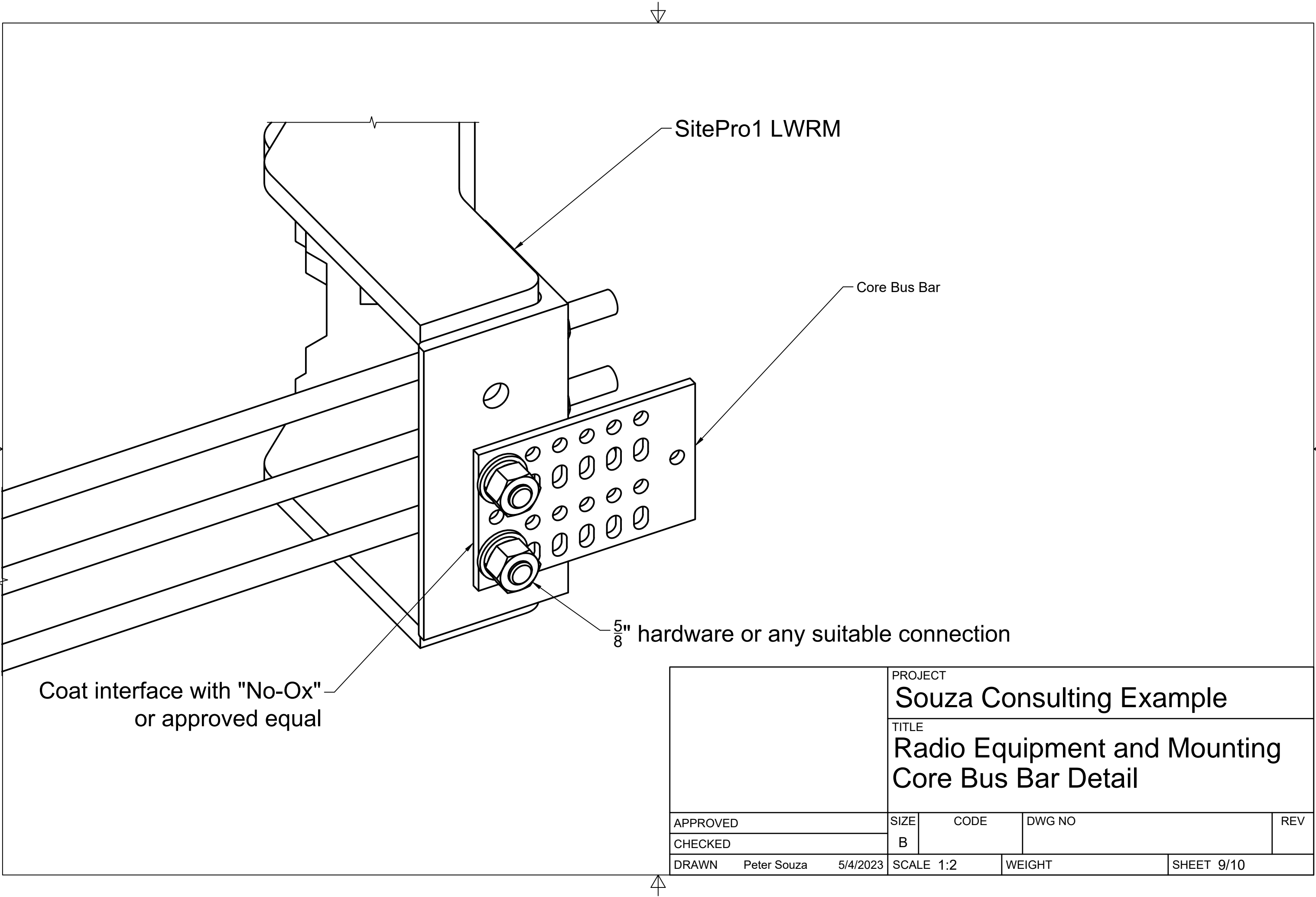
		PROJECT Souza Consulting Example		
		TITLE Radio Equipment and Mounting Elevation - Leg A		
APPROVED		SIZE	CODE	DWG NO
CHECKED		B		
DRAWN	Peter Souza	5/4/2023	SCALE 1:10	WEIGHT
				SHEET 5/10







			PROJECT Souza Consulting Example			
			TITLE Radio Equipment and Mounting Mount Assembly Detail			
APPROVED			SIZE B	CODE	DWG NO	REV
CHECKED						
DRAWN	Peter Souza	5/4/2023	SCALE 1:10		WEIGHT	SHEET 8/10



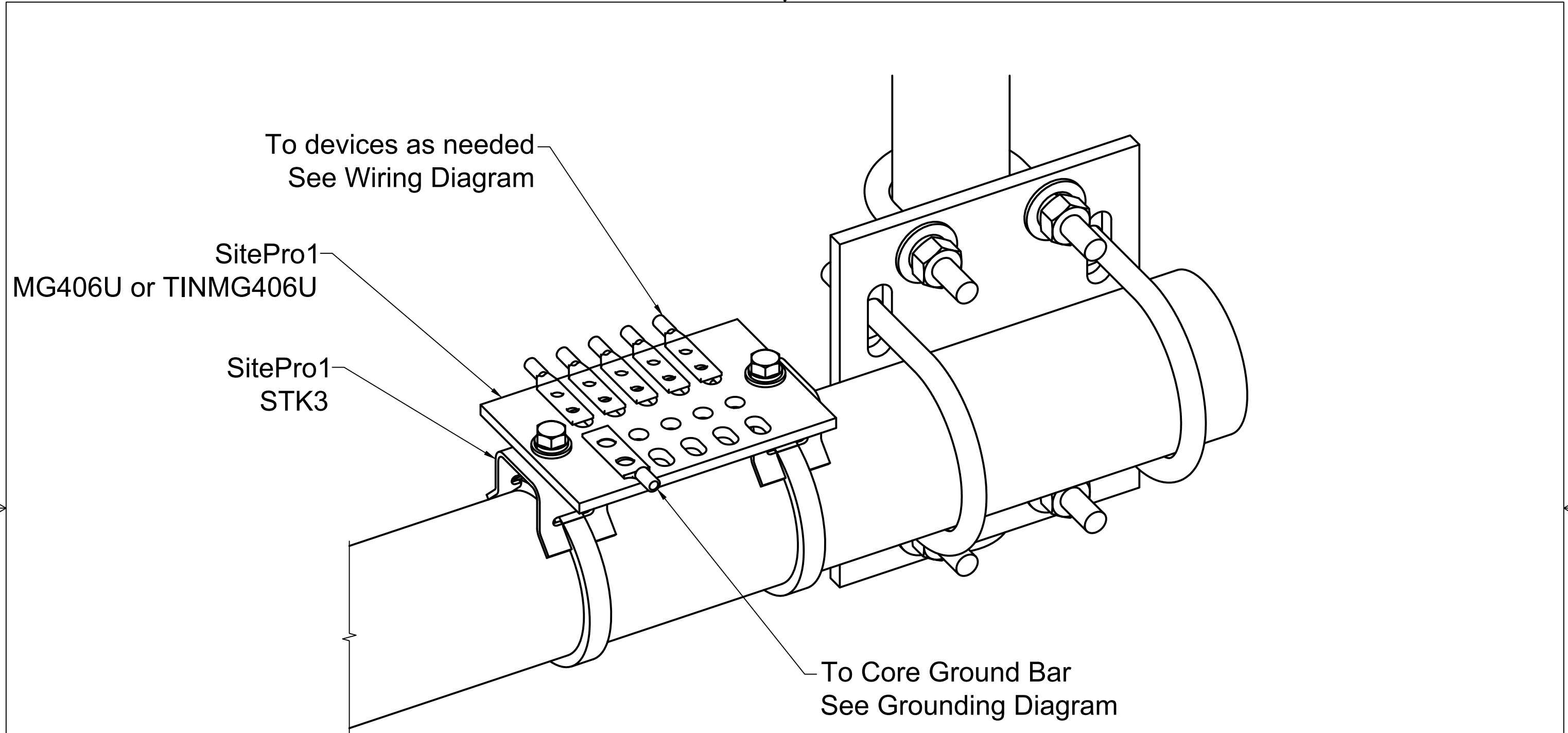
SitePro1 LWRM

Core Bus Bar

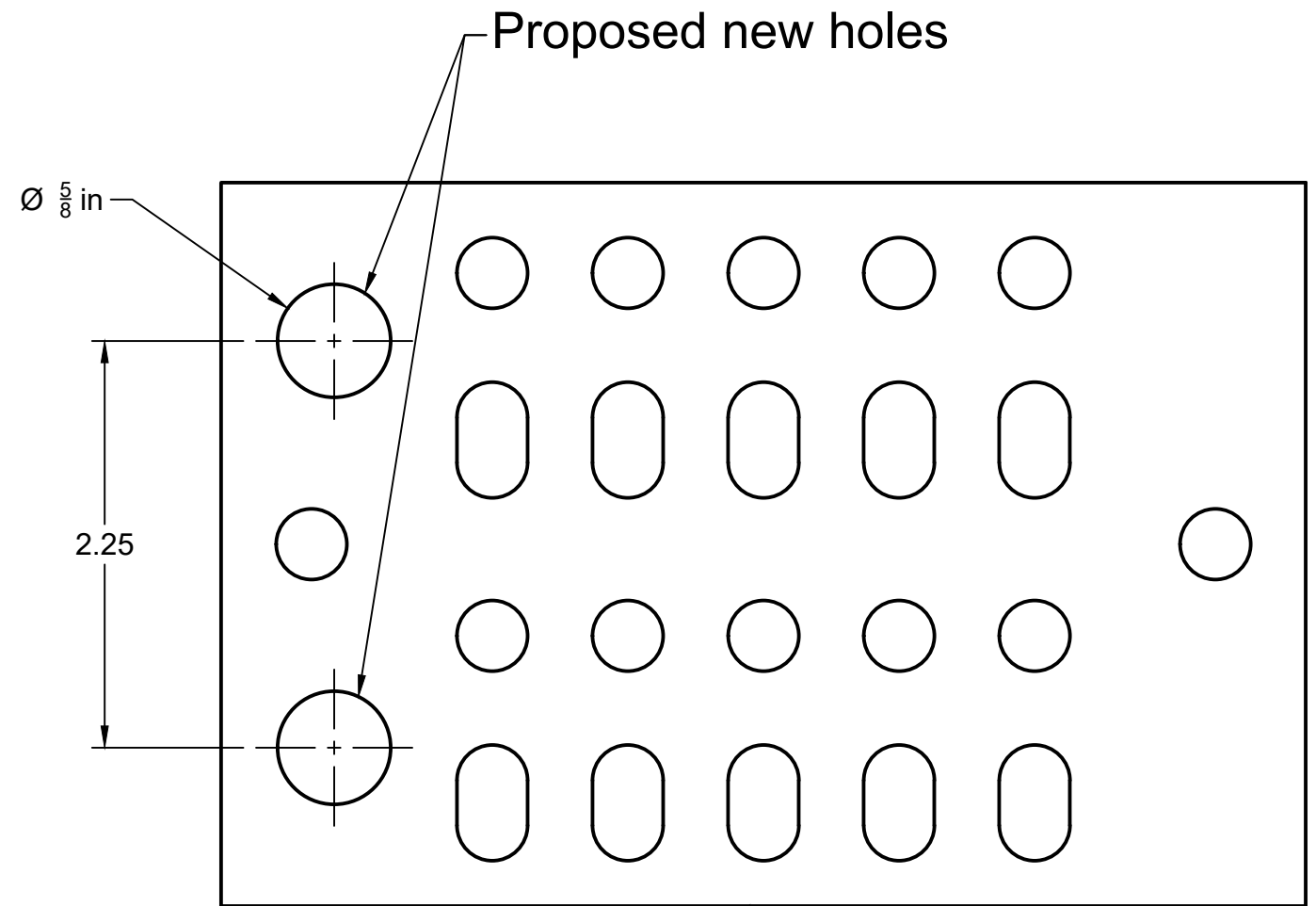
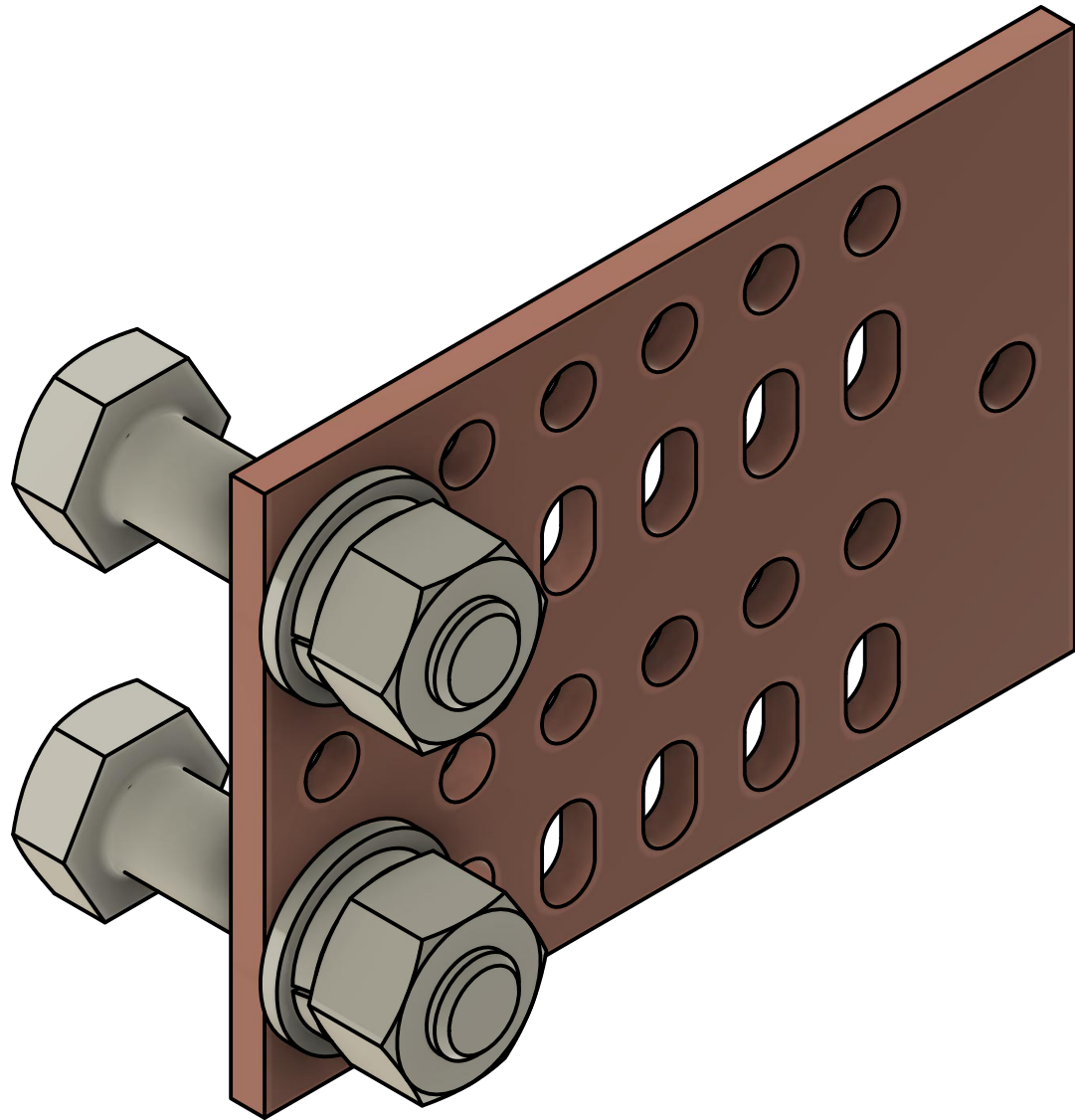
5/8" hardware or any suitable connection

Coat interface with "No-Ox"
or approved equal

	PROJECT Souza Consulting Example			
	TITLE Radio Equipment and Mounting Core Bus Bar Detail			
APPROVED	SIZE	CODE	DWG NO	REV
CHECKED	B			
DRAWN	Peter Souza	5/4/2023	SCALE 1:2	WEIGHT
			SHEET 9/10	

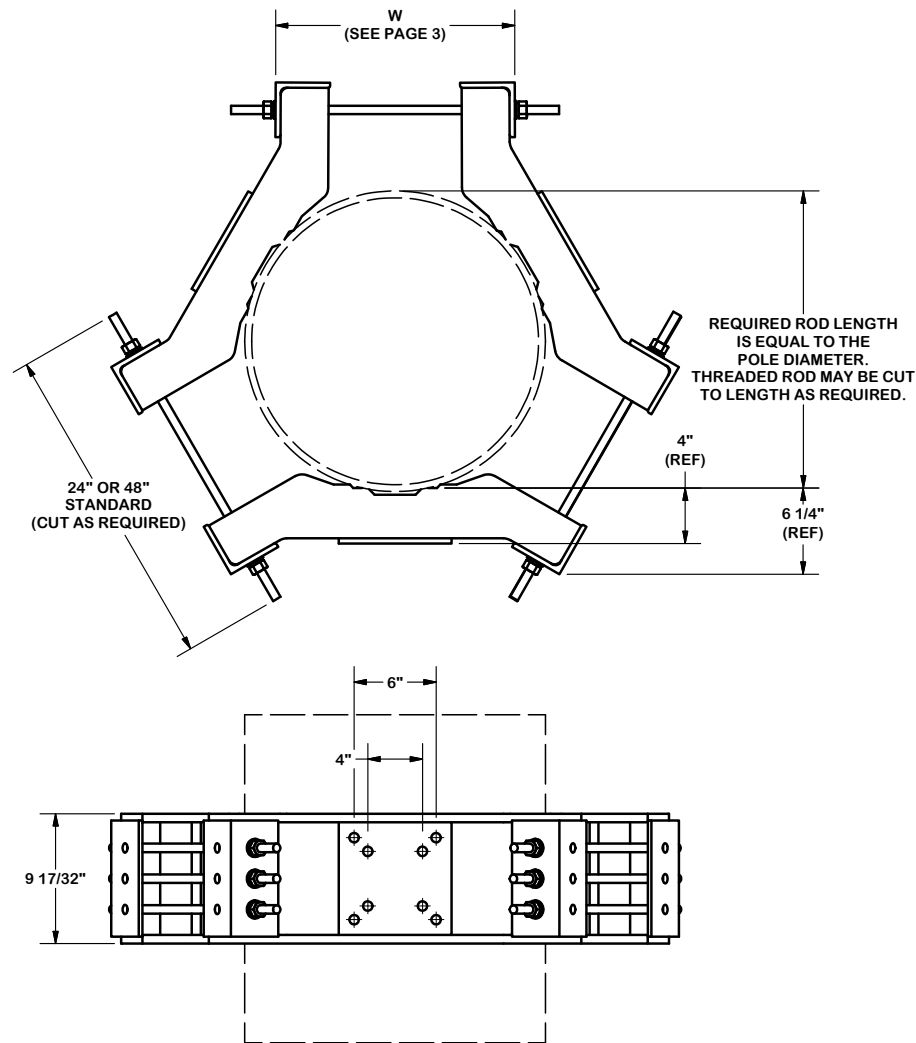


		PROJECT Souza Consulting Example			
		TITLE Radio Equipment and Mounting Standoff Bus Bar Detail			
APPROVED		SIZE	CODE	DWG NO	REV
CHECKED		B			
DRAWN	Peter Souza	9/26/2023	SCALE 1:2	WEIGHT	SHEET 10/10

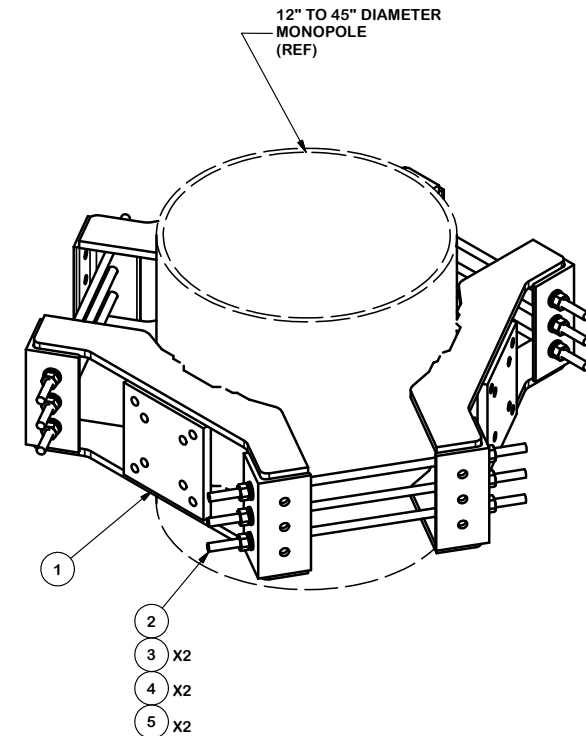


MG406U or TINMG406U

		PROJECT			
		Example Bonded Grounding			
		TITLE			
		Grounding assembly - Core for monopole ring mount			
APPROVED		SIZE	CODE	DWG NO	REV
CHECKED		B			
DRAWN	Peter Souza	9/27/2023	SCALE 1:1	WEIGHT	SHEET 1/1



PARTS LIST						
ITEM	QTY	PART NO.	PART DESCRIPTION	LENGTH	UNIT WT.	NET WT.
1	3	X-LWRM	RING MOUNT WELDMENT		68.16	204.48
2	9	G58R-48	5/8" x 48" THREADED ROD (HDG.)		0.55	4.94
2	9	G58R-24	5/8" x 24" THREADED ROD (HDG.)		0.55	4.94
3	18	A58FW	5/8" HDG A325 FLATWASHER		0.03	0.61
4	18	G58LW	5/8" HDG LOCKWASHER		0.03	0.47
5	18	A58NUT	5/8" HDG A325 HEX NUT		0.13	2.34
TOTAL WT. #						264.35



TOLERANCE NOTES

TOLERANCES ON DIMENSIONS, UNLESS OTHERWISE NOTED ARE:
 SAWED, SHEARED AND GAS CUT EDGES ($\pm 0.030"$)
 DRILLED AND GAS CUT HOLES ($\pm 0.030"$) - NO CONING OF HOLES
 LASER CUT EDGES AND HOLES ($\pm 0.010"$) - NO CONING OF HOLES
 BENDS ARE $\pm 1/2$ DEGREE
 ALL OTHER MACHINING ($\pm 0.030"$)
 ALL OTHER ASSEMBLY ($\pm 0.060"$)

PROPRIETARY NOTE:
 THE DATA AND TECHNIQUES CONTAINED IN THIS DRAWING ARE PROPRIETARY INFORMATION OF VALMONT
 INDUSTRIES AND CONSIDERED A TRADE SECRET. ANY USE OR DISCLOSURE WITHOUT THE CONSENT OF
 VALMONT INDUSTRIES IS STRICTLY PROHIBITED.

DESCRIPTION

RING MOUNT
 ASSEMBLY
 12" TO 45" DIAMETER POLE

CPD NO.
4433

DRAWN BY
BMC 3/17/2009

ENG. APPROVAL

CLASS SUB
81 01

DRAWING USAGE
CUSTOMER

CHECKED BY
CEK 8/24/2012

**SITE
PRO 1**

A valmont COMPANY

Engineering
 Support Team:
 1-888-753-7446

Locations:
 New York, NY
 Atlanta, GA
 Los Angeles, CA
 Plymouth, IN
 Salem, OR
 Dallas, TX

PART NO.

LWRM


DWG. NO.

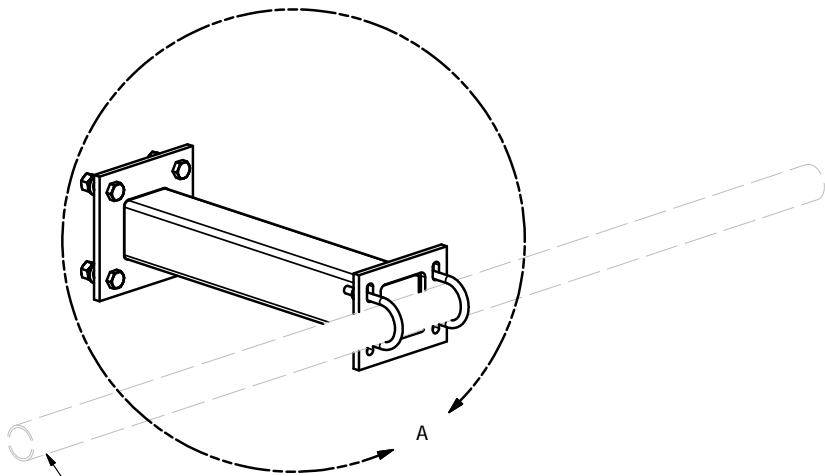
LWRM

A	REDRAWN IN INV. UPDATED TABLES & VIEWS	KC8	7/25/2012
REV	DESCRIPTION OF REVISIONS	CPD	BY DATE
REVISION HISTORY			

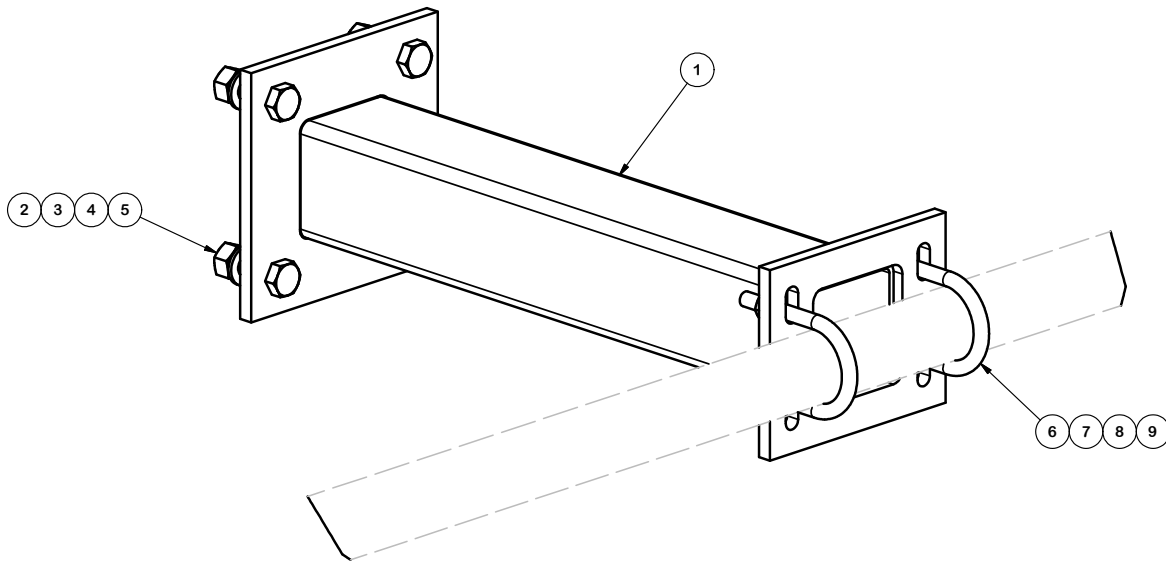
Diagram illustrating the measurement of pole diameter. The pole piece is shown with a central circular opening. The width of the pole piece is labeled W . The pole diameter is indicated by a vertical double-headed arrow, with the text: POLE DIAMETER IS CALCULATED FROM MEASURED CIRCUMFERENCE.

	DIA (REF)	W	CIRCUMF	DIA (REF)	W	CIRCUMF	DIA (REF)	W	CIRCUMF	DIA (REF)	W	CIRCUMF	DIA (REF)	W	CIRCUMF	DIA (REF)	W
38"	12-1/8"	9-3/16"	63"	20-1/16"	16-3/16"	88"	28"	23-3/16"	113"	36"	30-3/16"	138"	43-15/16"	37-1/4"	163"	51-7/8"	44-5/16"
39"	12-7/16"	9-7/16"	64"	20-3/8"	16-7/16"	89"	28-5/16"	23-1/2"	114"	36-5/16"	30-1/2"	139"	44-1/4"	37-1/2"	164"	52-3/16"	44-9/16"
40"	12-3/4"	9-3/4"	65"	20-11/16"	16-3/4"	90"	28-5/8"	23-3/4"	115"	36-5/8"	30-3/4"	140"	44-9/16"	37-13/16"	165"	52-1/2"	44-7/8"
41"	13-1/16"	10"	66"	21"	17"	91"	28-15/16"	24-1/16"	116"	36-15/16"	31-1/16"	141"	44-7/8"	38-1/16"	166"	52-13/16"	45-3/16"
42"	13-3/8"	10-5/16"	67"	21-5/16"	17-5/16"	92"	29-5/16"	24-5/16"	117"	37-1/4"	31-5/16"	142"	45-3/16"	38-3/8"	167"	53-3/16"	45-7/16"
43"	13-11/16"	10-9/16"	68"	21-5/8"	17-9/16"	93"	29-5/8"	24-5/8"	118"	37-9/16"	31-5/8"	143"	45-1/2"	38-9/16"	168"	53-1/2"	45-3/4"
44"	14"	10-7/8"	69"	21-15/16"	17-7/8"	94"	29-15/16"	24-7/8"	119"	37-7/8"	31-7/8"	144"	45-13/16"	38-7/8"	169"	53-13/16"	46"
45"	14-5/16"	11-2/16"	70"	22-5/16"	18-1/8"	95"	30-1/4"	25-1/8"	120"	38-3/16"	32-3/16"	145"	46-1/8"	39-1/8"	170"	54-1/8"	46-5/16"
46"	14-5/8"	11-3/8"	71"	22-5/8"	18-7/16"	96"	30-9/16"	25-7/16"	121"	38-1/2"	32-7/16"	146"	46-1/2"	39-7/16"	171"	54-7/16"	46-9/16"
47"	14-15/16"	11-11/16"	72"	22-15/16"	18-11/16"	97"	30-7/8"	25-11/16"	122"	38-13/16"	32-3/4"	147"	46-13/16"	39-3/4"	172"	54-3/4"	46-7/8"
48"	15-1/4"	11-15/16"	73"	23-1/4"	19"	98"	31-3/16"	26"	123"	39-1/8"	33"	148"	47-1/8"	40"	173"	55-1/16"	47-1/8"
49"	15-5/8"	12-1/4"	74"	23-9/16"	19-1/4"	99"	31-1/2"	26-1/4"	124"	39-1/2"	33-5/16"	149"	47-7/16"	40-5/16"	174"	55-3/8"	47-7/16"
50"	15-15/16"	12-1/2"	75"	23-7/8"	19-9/16"	100"	31-13/16"	26-9/16"	125"	39-13/16"	33-9/16"	150"	47-3/4"	40-9/16"	175"	55-11/16"	47-11/16"
51"	16-1/4"	12-13/16"	76"	24-1/4"	19-13/16"	101"	32-1/8"	26-13/16"	126"	40-1/8"	33-7/8"	151"	48-1/16"	40-7/8"	176"	56"	48"
52"	16-9/16"	13-1/16"	77"	24-1/2"	20-1/8"	102"	32-7/16"	27"	127"	40-7/16"	34-1/8"	152"	48-3/8"	41-3/16"	177"	56-5/16"	48-1/4"
53"	16-7/8"	13-3/8"	78"	24-13/16"	20-3/8"	103"	32-13/16"	27-3/8"	128"	40-3/4"	34-7/16"	153"	48-11/16"	41-7/16"	178"	56-11/16"	48-9/16"
54"	17-3/16"	13-5/8"	79"	25-1/8"	20-11/16"	104"	33-1/8"	27-11/16"	129"	41-1/16"	31-11/16"	154"	49"	41-3/4"	179"	57"	48-7/8"
55"	17-1/2"	13-15/16"	80"	25-7/16"	20-15/16"	105"	33-7/16"	27-15/16"	130"	41-3/8"	35"	155"	49-5/16"	42"	180"	57-5/16"	49-1/8"
56"	17-13/16"	14-3/16"	81"	25-13/16"	21-1/4"	106"	33-3/4"	28-1/4"	131"	41-11/16"	35-1/4"	156"	49-11/16"	42-5/16"	181"	57-5/8"	49-7/16"
57"	18-1/8"	14-1/2"	82"	26-1/8"	21-1/2"	107"	34-1/16"	28-1/2"	132"	42"	35-9/16"	157"	50"	42-5/8"	182"	57-15/16"	49-11/16"
58"	18-7/16"	14-3/4"	83"	26-7/16"	21-13/16"	108"	34-3/8"	28-13/16"	133"	42-5/16"	35-13/16"	158"	50-5/16"	42-7/8"	183"	58-1/4"	50"
59"	18-3/4"	15-1/16"	84"	26-3/4"	22-1/16"	10											

					<div>TOLERANCE NOTES</div> <div>TOLERANCES ON DIMENSIONS, UNLESS OTHERWISE NOTED ARE: SAWED, SHEARED AND GAS CUT EDGES (± 0.030") DRILLED AND GAS CUT HOLES (± 0.030") - NO CONING OF HOLES LASER CUT EDGES AND HOLES (± 0.010") - NO CONING OF HOLES BENDS ARE ± 1/2 DEGREE ALL OTHER MACHINING (± 0.030") ALL OTHER ASSEMBLY (± 0.060")</div>					<div>DESCRIPTION</div> <div>RING MOUNT ASSEMBLY</div> <div>12" TO 45" DIAMETER POLE</div>					<div><div><div>SITE PRO 1</div></div><div>Locations: New York, NY Atlanta, GA Los Angeles, CA Plymouth, IN Salem, OR Dallas, TX</div><div>Engineering Support Team: 1-888-753-7446</div><div>A valmont  COMPANY</div></div>					PART NO.		LWRM		PAGE 3 OF 3	
A	REDRAWN IN INV, UPDATED TABLES & VIEWS					KC8	7/25/12		CPD NO.		4433		DRAWN BY		BMC 3/17/2009		ENG. APPROVAL		PART NO.		LWRM				
REV	DESCRIPTION OF REVISIONS				CPD	BY	DATE		CLASS		SUB		DRAWING USAGE		CHECKED BY		DWG. NO.		LWRM						
REVISION HISTORY																									
THE DATA AND TECHNIQUES CONTAINED IN THIS DRAWING ARE PROPRIETARY INFORMATION OF VALMONT INDUSTRIES AND CONSIDERED A TRADE SECRET. ANY USE OR DISCLOSURE WITHOUT THE CONSENT OF VALMONT INDUSTRIES IS STRICTLY PROHIBITED.																									



2-3/8" OD PIPE, 2-7/8" OD PIPE or 3-1/2" OD PIPE,
PIPE NOT INCLUDED



DETAIL A

PARTS LIST						
ITEM	QTY	PART NO.	PART DESCRIPTION	LENGTH	UNIT WT.	NET WT.
1	1	X-WWM02	2' STAND-OFF ARM / WALL MOUNT		30.51	30.51
2	4	A582112	5/8" x 2-1/2" HDG A325 HEX BOLT	2 1/2 in	0.33	1.34
3	4	A58FW	5/8" HDG A325 FLATWASHER		0.03	0.14
4	4	G58LW	5/8" HDG LOCKWASHER		0.03	0.10
5	4	A58NUT	5/8" HDG A325 HEX NUT		0.13	0.52
6	2	X-UB1212	1/2" X 2-1/2" X 4-1/2" X 2" GALV. U-BOLT		0.66	1.31
6	2	X-UB1300	1/2" X 3" X 5" X 2" GALV U-BOLT		0.70	1.39
6	2	X-UB1358	1/2" X 3-5/8" X 5-1/2" X 3" GALV U-BOLT		0.77	1.54
7	4	G12FW	1/2" HDG USS FLATWASHER		0.03	0.14
8	4	G12LW	1/2" HDG LOCKWASHER		0.01	0.06
9	4	G12NUT	1/2" HDG HEAVY 2H HEX NUT		0.07	0.29
TOTAL WT. #						39.27

TOLERANCE NOTES

TOLERANCES ON DIMENSIONS, UNLESS OTHERWISE NOTED ARE:
SAWED, SHEARED AND GAS CUT EDGES ($\pm 0.030"$)
DRILLED AND GAS CUT HOLES ($\pm 0.030"$) - NO CONING OF HOLES
LASER CUT EDGES AND HOLES ($\pm 0.010"$) - NO CONING OF HOLES
BENDS ARE $\pm 1/2$ DEGREE
ALL OTHER MACHINING ($\pm 0.030"$)
ALL OTHER ASSEMBLY ($\pm 0.060"$)

PROPRIETARY NOTE:
THE DATA AND TECHNIQUES CONTAINED IN THIS DRAWING ARE PROPRIETARY INFORMATION OF VALMONT INDUSTRIES AND CONSIDERED A TRADE SECRET. ANY USE OR DISCLOSURE WITHOUT THE CONSENT OF VALMONT INDUSTRIES IS STRICTLY PROHIBITED.

DESCRIPTION

2' STAND-OFF
ANTENNA WALL MOUNT,
SITE PRO 1

CPD NO. 4714	DRAWN BY RH18 3/23/2010	ENG. APPROVAL
CLASS 81	SUB 01	DRAWING USAGE CUSTOMER
	CHECKED BY BMC 5/10/2010	

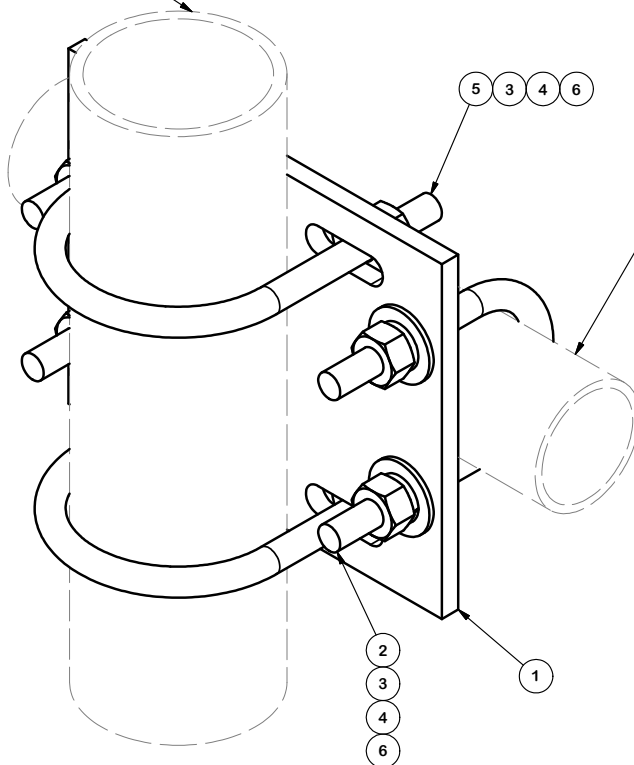


Engineering
Support Team:
1-888-753-7446

Locations:
New York, NY
Atlanta, GA
Los Angeles, CA
Plymouth, IN
Salem, OR
Dallas, TX

PART NO. MM02	PAGE 1 OF 1
DWG. NO. MM02	

3-1/2" O.D. ANTENNA PIPE
(ORDERED SEPARATELY)



2-3/8" O.D. PIPE
(ORDERED SEPARATELY)

PARTS LIST						
ITEM	QTY	PART NO.	PART DESCRIPTION	LENGTH	UNIT WT.	NET WT.
1	1	SCX4	CROSSOVER PLATE	8 1/2 in	6.02	6.02
2	2	X-UB1212	1/2" X 2-1/2" X 4-1/2" X 2" U-BOLT (HDG.)		0.63	1.25
3	8	G12FW	1/2" HDG USS FLATWASHER		0.03	0.27
4	8	G12LW	1/2" HDG LOCKWASHER		0.01	0.11
5	2	X-UB1358	1/2" X 3-5/8" X 5-1/2" X 3" U-BOLT (HDG.)		0.66	1.31
6	8	G12NUT	1/2" HDG HEAVY 2H HEX NUT		0.07	0.57
TOTAL WT. #						9.77

TOLERANCE NOTES

TOLERANCES ON DIMENSIONS, UNLESS OTHERWISE NOTED ARE:
SAWED, SHEARED AND GAS CUT EDGES ($\pm 0.030"$)
DRILLED AND GAS CUT HOLES ($\pm 0.030"$) - NO CONING OF HOLES
LASER CUT EDGES AND HOLES ($\pm 0.010"$) - NO CONING OF HOLES
BENDS ARE $\pm 1/2$ DEGREE
ALL OTHER MACHINING ($\pm 0.030"$)
ALL OTHER ASSEMBLY ($\pm 0.060"$)

PROPRIETARY NOTE:
THE DATA AND TECHNIQUES CONTAINED IN THIS DRAWING ARE PROPRIETARY INFORMATION OF VALMONT INDUSTRIES AND CONSIDERED A TRADE SECRET. ANY USE OR DISCLOSURE WITHOUT THE CONSENT OF VALMONT INDUSTRIES IS STRICTLY PROHIBITED.

DESCRIPTION

CROSSOVER PLATE KIT

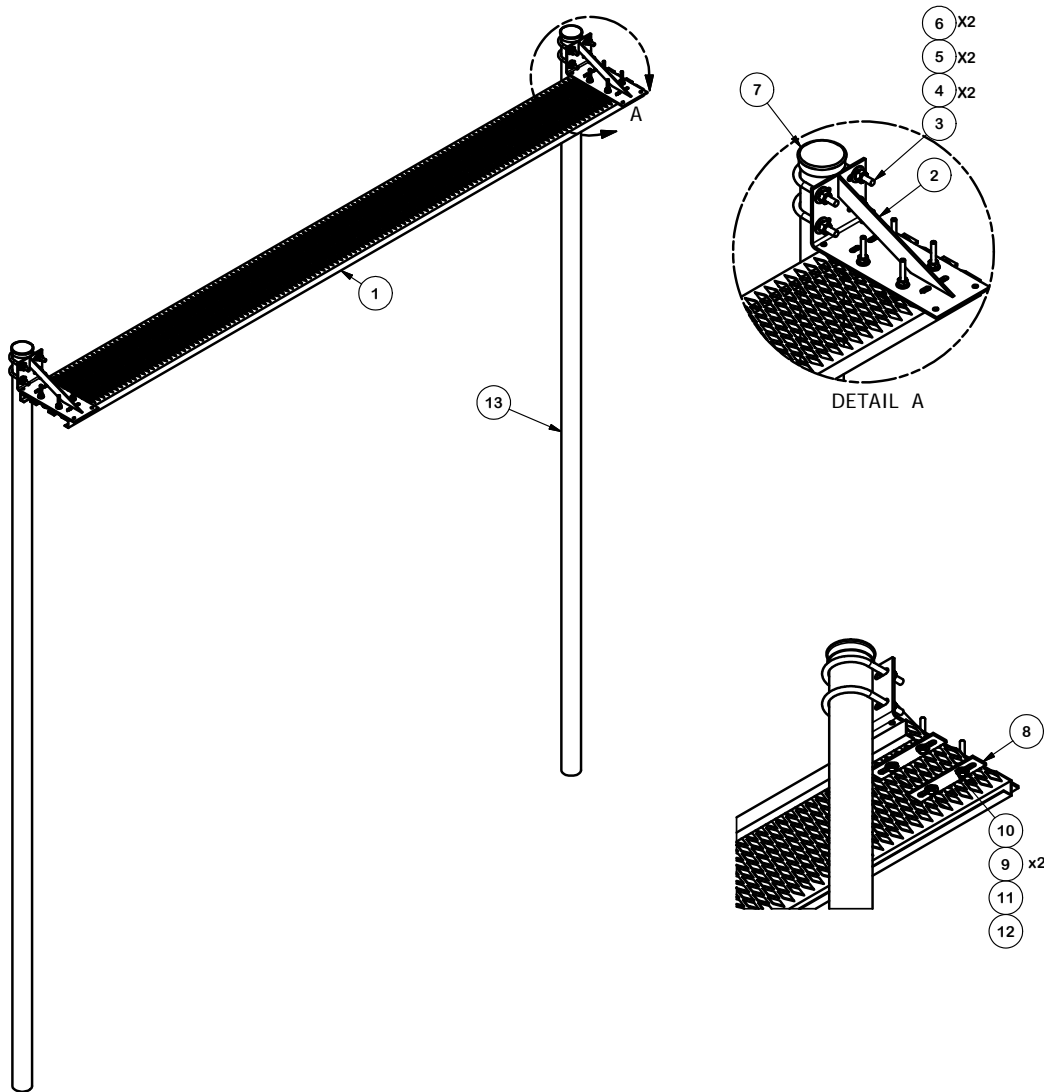
CPD NO.		DRAWN BY	ENG. APPROVAL
		CEK 7/1/2011	
CLASS	SUB	DRAWING USAGE	CHECKED BY
81	01	CUSTOMER	BMC 7/1/2011



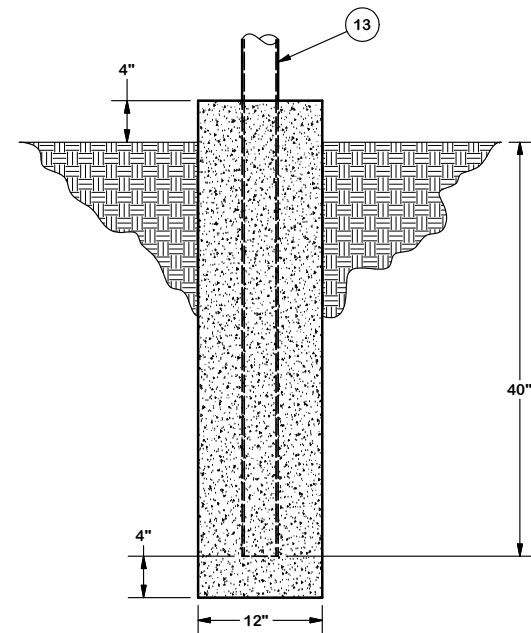
Engineering
Support Team:
1-888-753-7446

Locations:
New York, NY
Atlanta, GA
Los Angeles, CA
Plymouth, IN
Salem, OR
Dallas, TX

PART NO.	SCX43-K	PAGE
DWG. NO.	SCX43-K	1 OF 1



PARTS LIST						
ITEM	QTY	PART NO.	PART DESCRIPTION	LENGTH	UNIT WT.	NET WT.
1	1	GRS12	12" WIDE GRIP STRUT		24.40	24.40
2	2	HHD12	12" CANTILEVER WELDMENT		8.01	16.02
3	4	X-UB1358	1/2" X 3-5/8" X 5-1/2" X 3" U-BOLT (HDG.)		0.66	2.63
4	8	G12FW	1/2" HDG USS FLATWASHER		0.03	0.27
5	8	G12LW	1/2" HDG LOCKWASHER		0.01	0.11
6	8	G12NUT	1/2" HDG HEAVY 2H HEX NUT		0.07	0.57
7	2	PC312	3-1/2" FENCE POST CAP		0.59	1.17
8	4	SPLICE	SPLICE FOR GRIP STRUT	7 3/8 in	0.53	2.10
9	16	G38FW	3/8" HDG USS FLATWASHER		0.01	0.19
10	8	G3803	3/8" x 3" HDG HEX BOLT GR5		0.12	0.97
11	8	G38LW	3/8" HDG LOCKWASHER		0.01	0.05
12	8	G38NUT	3/8" HDG HEAVY 2H HEX NUT		0.03	0.27
13	2	P3160	3" SCH. 40 PIPE (3.5" O.D. x 0.216" WALL) A500	160 in	101.25	202.50
TOTAL WT. #						250.85



DIRECT BURIAL FOOTING

TOLERANCE NOTES

TOLERANCES ON DIMENSIONS, UNLESS OTHERWISE NOTED ARE:
 SAWED, SHEARED AND GAS CUT EDGES ($\pm 0.030"$)
 DRILLED AND GAS CUT HOLES ($\pm 0.030"$) - NO CONING OF HOLES
 LASER CUT EDGES AND HOLES ($\pm 0.010"$) - NO CONING OF HOLES
 BENDS ARE $\pm 1/2$ DEGREE
 ALL OTHER MACHINING ($\pm 0.030"$)
 ALL OTHER ASSEMBLY ($\pm 0.060"$)

PROPRIETARY NOTE:
 THE DATA AND TECHNIQUES CONTAINED IN THIS DRAWING ARE PROPRIETARY INFORMATION OF VALMONT INDUSTRIES AND CONSIDERED A TRADE SECRET. ANY USE OR DISCLOSURE WITHOUT THE CONSENT OF VALMONT INDUSTRIES IS STRICTLY PROHIBITED.

DESCRIPTION

CANTILEVER GRIP-SPAN ICE BRIDGE KIT
 WITH NO TRAPEZE
 13'-4" DIRECT BURIAL

CPD NO.	DRAWN BY	ENG. APPROVAL
81	CEK 8/10/2011	
SUB	DRAWING USAGE	CHECKED BY
02	CUSTOMER	BMC 8/15/2011

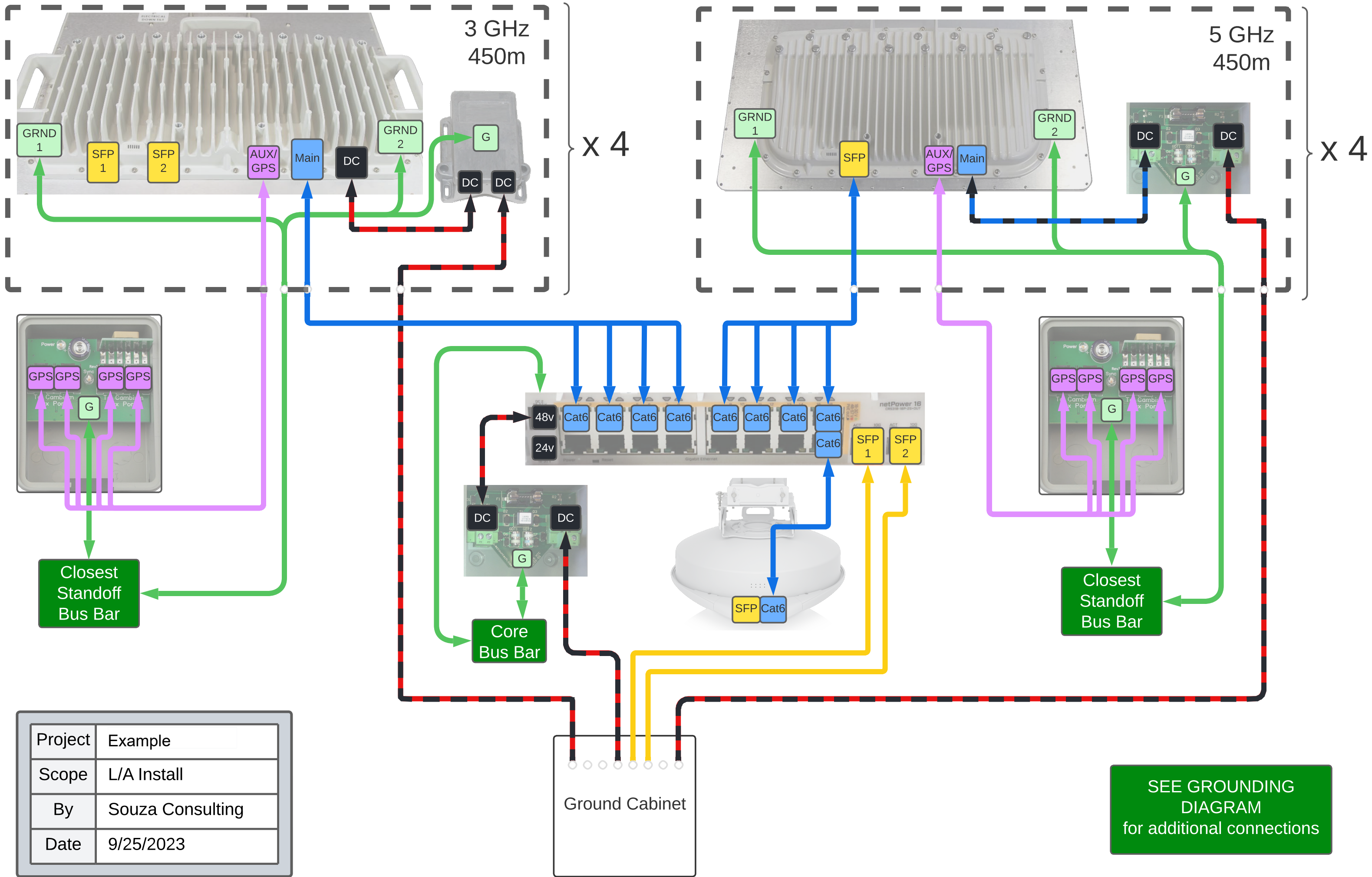


A valmont COMPANY



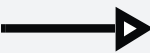

Engineering
 Support Team:
 1-888-753-7446

Locations:
 New York, NY
 Atlanta, GA
 Los Angeles, CA
 Plymouth, IN
 Salem, OR
 Dallas, TX

PART NO.	IB12D	PAGE
DWG. NO.	IB12D	1 OF 1

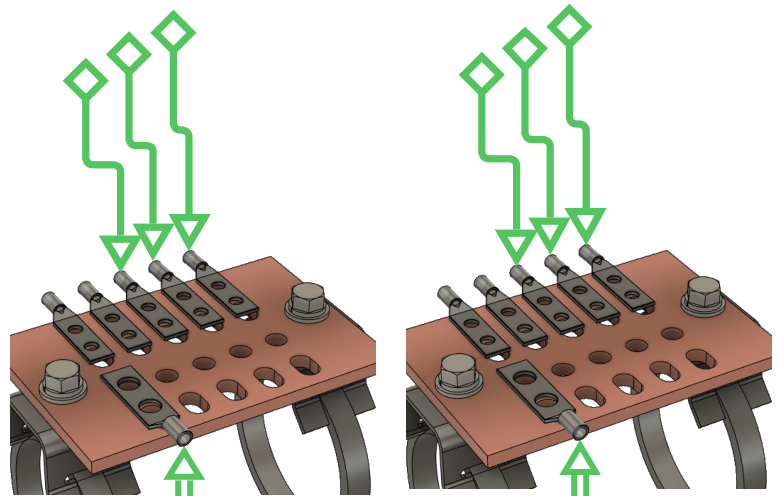


Legend

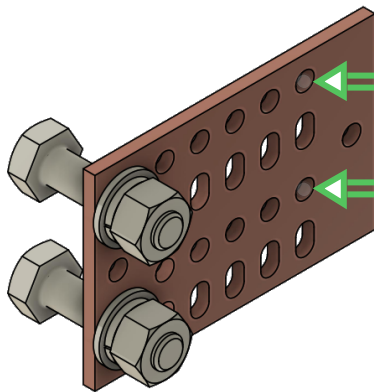
	#10, Green
	#6, Green
	Crimped lugs
	Crimped ring terminal and nut/bolt connection. Various sizes

To devices as needed
See Wiring Diagram

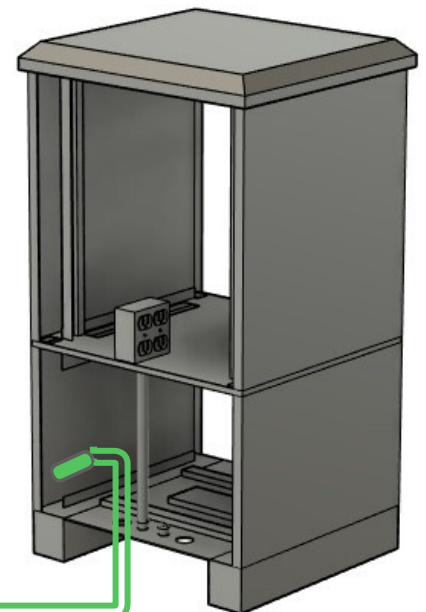
Standoff
Bus Bars



3 x

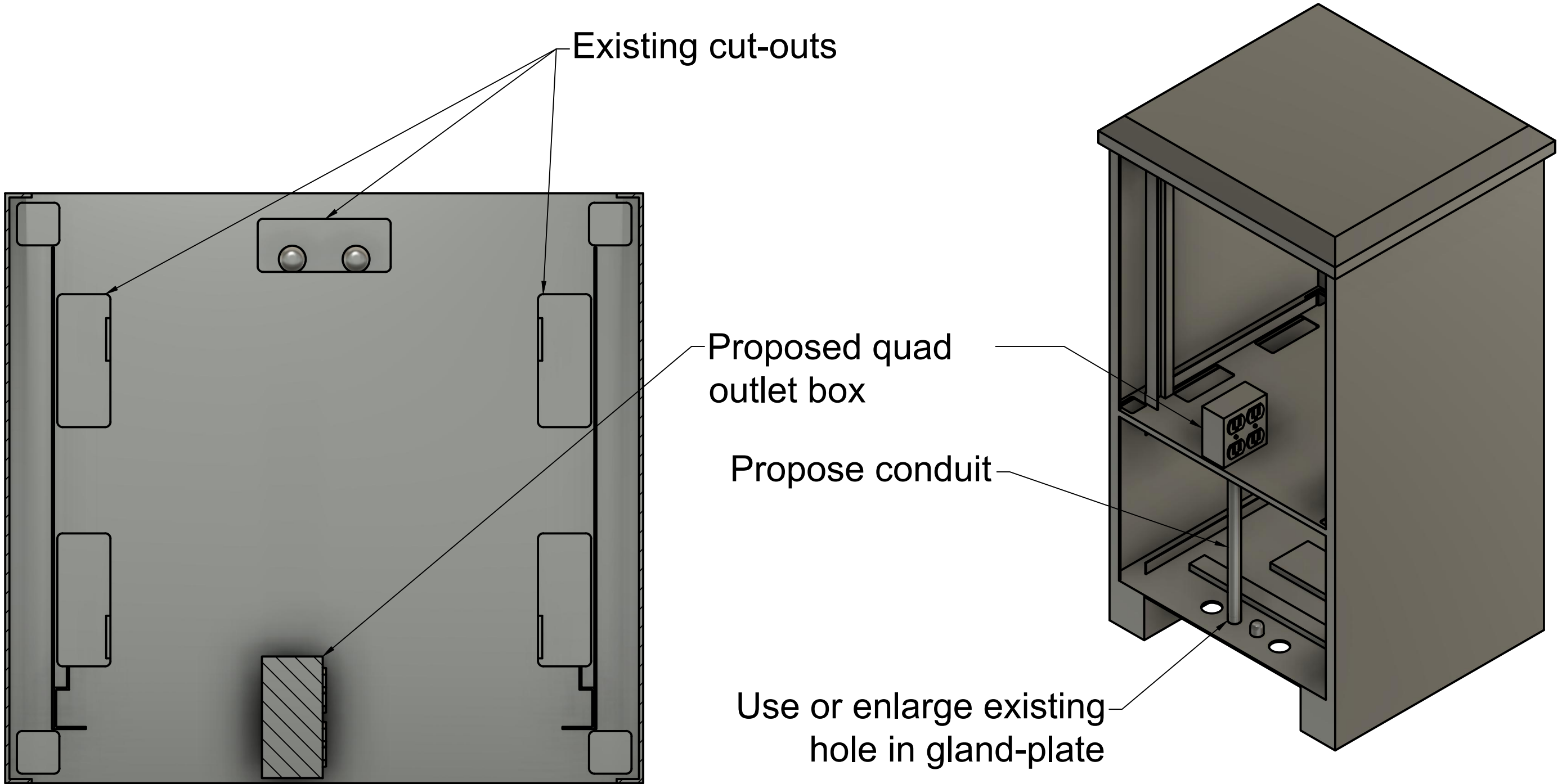


Core
Bus Bar



Site
Ground Ring

Project	Example
Scope	Grounding + Cabinet
By	Souza Consulting
Date	9/27/2023



View: Middle shelf from above

		PROJECT Souza Consulting Example			
		TITLE LSO Cabinet Electrical Placement			
APPROVED		SIZE	CODE	DWG NO	REV
CHECKED		B			
DRAWN	Peter Souza	9/20/2023	SCALE 1:8	WEIGHT	SHEET 1/1